



Tooling Technology

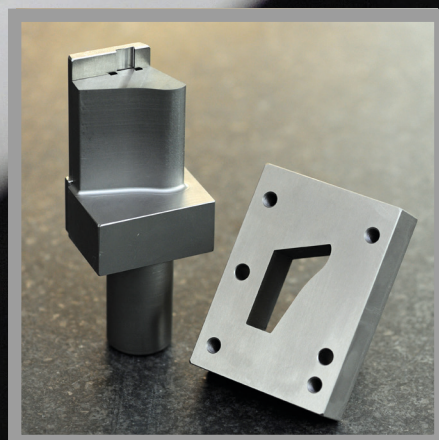
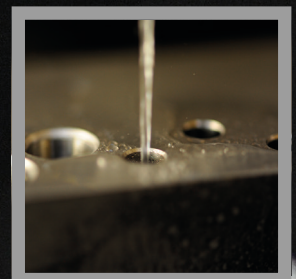
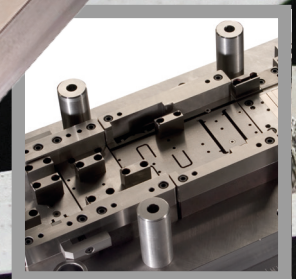
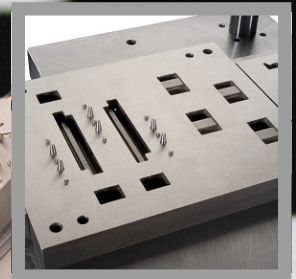
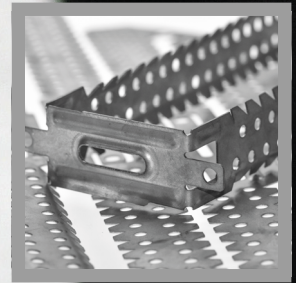
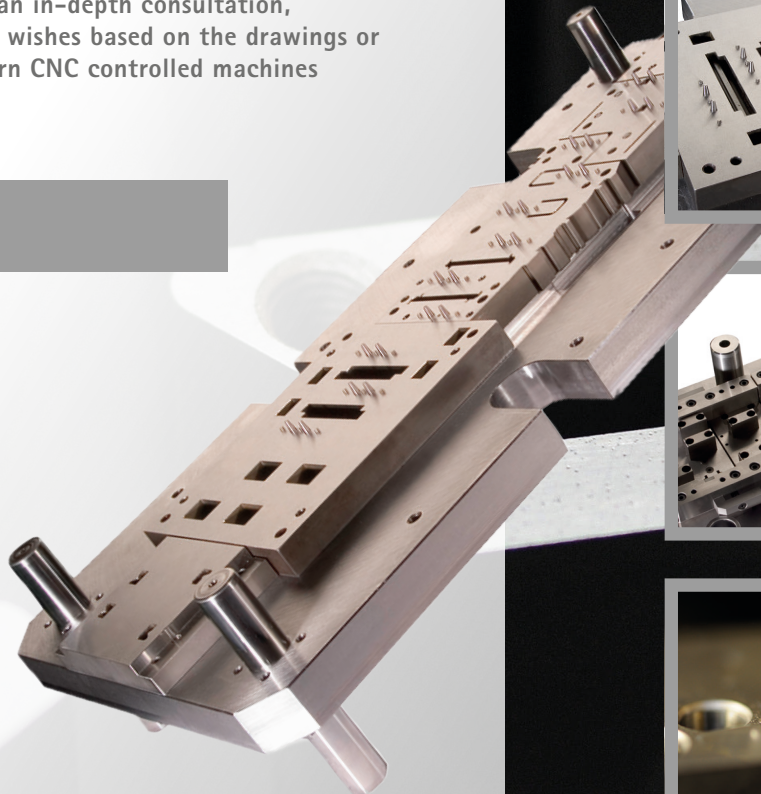
Tooling Technology
As individual as your production

Tailor-made tooling technology

When it comes to providing you with tools which fit 100% in your production, we are the right people for you! After an in-depth consultation, our qualified team will implement your wishes based on the drawings or sample pieces supplied. The most modern CNC controlled machines ensure a consistently high quality.

Our range of products:

- Progressive die tools
- Stamping, bending and progressive tools
- Full punching tools
- Single part and tool repair
- Spare parts (also for tools from other manufacturers)
- Optimization of your manufacturing and production processes after the start of tool operation.



A+N | POTT GmbH

Vieringhausen 5a
42857 Remscheid
Germany

Tel: +49 2191 78222-0
Fax: +49 2191 78222-11
info@an-pott.com

» www.an-pott.com